

DEICKE RICHARDS REVIEW 2011



An increased connection with regional places and fresh takes on our core interests are focal points of current work. Our 2011 projects took us to the Pilbara and Darwin, north to the Whitsunday region and west to Roma. And while clients present new opportunities, many of the ideas that hold our interest as designers remain consistent.

Our design advocacy for housing affordability continues. It influenced our contribution to the *Next Generation Planning* handbook, guided housing projects being constructed in Darwin and South East Queensland and continues to inform research. We're part of a group of industry partners working with the University of the Sunshine Coast to research future housing for seniors. The outcomes appear likely to have wider impact than anticipated — with useful findings for approaches to growth, density and urban amenity.

The practice's community design expertise found new purpose in 2011, with staff contributing to the rapid response required to master plan Grantham. It's been widely acknowledged that natural disasters here and abroad have prompted new thinking around design and its responsibilities to the community. Our community design interests also drove a series of master planning projects for Catholic and independent schools, helping these communities plan for the future and prioritise capital works programs.

In Brisbane, 2011 brought opportunities to design for high intensity, inner city developments — apartments for a prominent South Brisbane site and a mixed-used precinct in the Valley, neighbouring the RNA redevelopment. These and concept designs for commercial buildings provided new contexts for our approach to regional urbanism.

These pages profile selected recent projects. Thanks to our clients, partners and staff for their commissions and contributions.

Left: Deicke Richards celebrated its 17th birthday in 2011, along with the launch of a new website. Directors—from left: Cameron Davies, Peter Richards, John Deicke and Eloise Atkinson. *Photograph: Adrienne Campbell (Pixel Tree)* Middle: The Baxter Street carpark turned into a temporary forest to mark international PARK(ing) Day in September 2011. Suspended cane lamps by Darcy Clarke. Right: Interior, barrister's chambers, Santos House. Winner of a commendation award at the Australian Institute of Architects (AIA) 2011 Brisbane Regional Architecture Awards. *Photograph: Scott Burrows*



CONFERENCES AND PRESENTATIONS

- Urban Design Alliance Queensland talk series (Cameron Davies, Form Matters; Peter Richards, Congress for the New Urbanism (CNU 19) and Next Generation Planning)
- Subtropical Cities 2011, Florida (Peter Richards, one of six keynote speakers)
- Congress for the New Urbanism (CNU 19), Madison, Wisconsin (Peter Richards)
- Australian Catholic Sector Planning Conference, Cairns (John Deicke, speaking with Stephen Bowers on master planning education campuses)
- *Cities with People in Mind*, 12th International Cities, Town Centres & Communities Society 2011 Conference, Hobart (Eloise Atkinson and Phil Smith presented papers)
- 2011 PIA State Planning Conference (Peter Richards co-presented master class; Stephen Smith, Cameron Davies and Hayley Phillips also presented)
- ACNU Masterclass 2011 - Perth Light Rail TOD (Peter Richards, design team leader)

AWARDS

Commendation, AIA 2011 Brisbane Regional Architecture Awards (for barrister's chambers, Santos House)

Horticulturist of the Year 2011 (Arno King, for The Wesley Hospital Kim Walters Choices Garden)

Merit award, PIA Queensland Awards for Excellence, Woollongabba UDA

Ideas on Edge, international design competition (Deicke Richards' graduate architect Josh Spillane with industry colleagues Rick Hill and Leon McBride; one of three winning proposals)

AWARDS NEWS

Cotterill Avenue Aged Care won The Hard Won Victory Award at the PIA Queensland Awards for Excellence. The entry for this Churches of Christ Care Queensland project acknowledged the consultant team of Tract Consultants, Litoria and Deicke Richards.

Congratulations to the Queensland Reconstruction Authority and Lockyer Valley Regional Council (LVRC) who secured a merit award for Rebuilding Grantham Together and Strengthening Grantham Projects at the PIA Queensland Awards for Excellence. Deicke Richards developed Grantham's master plan in consultation with the community and continues to work in the township with the LVRC.

Visit our website for more news and information about conference presentations, awards and research.

RESEARCH — 12.20

This new research project explores detached housing types on small lots—12m x 20m. The project addresses the challenges of increasing density and providing high quality housing for changing family types. It recognises that the challenges are most keenly felt in new settlements, away from established urban areas, where compact housing, affordability and sustainability are desired. A lot size of 12m x 20m was considered appropriate to accommodate an urban detached house without compromising good environmental design and subtropical living. Peter Richards initiated the research, set the brief and invited design submissions for an in-house pin-up and critique. A publication to document the work is in progress.

When they're not at work...

John cooked a lot of delicious meals throughout the year, culminating in a culinary feast of epic proportions. He's now contemplating a slow cooker. **Peter** had a big year for travel — remarkable trips to Miami, Chicago and Madison in the US, the tropical north and red centre of the territory and the west including the Pilbara. Christmas with the family was spent in the UK, Norway and Italy. Watching AS Roma beat Chievo almost made up for missing the Roar final win as he flew back from the US. 2011 started strangely for **Eloise** being cut-off from her kids by the flooded Warrego Highway. Things improved with the family spending Easter in the Apple Isle and Christmas in the Big Apple. **Cameron** was caught up in flood waters for a week in central Queensland early in the year. But he was back by Easter for some cattle mustering, followed by a trip to Cambodia and Vietnam in April and lots of camping with the kids throughout the year. **Stephen** welcomed the birth of his second son Jack. He blames his mother-in-law for not actually making it to the birth. After a productive year, **Phil** ended 2011 wastefully — by crashing his bike into a full wheelie bin. An extended Christmas break enabled a full recovery and his morning grind has recommenced in earnest. **Shem** rode his bike to

work a lot. Sometimes via B1, 2 + 3, the Dream and Frosty's.

Arno continued his quarterly trips to Singapore to facilitate a horticulture and landscape course and also managed to satiate his addiction to the infamous durian (for those who love it, the 'king of fruits'). **Gerard** arrived in June after seven years in Dubai and set about rediscovering regional Australia. His regular travel between Toowoomba and Roma, Gympie and Gladstone may help explain why everyone thought he was so quiet around the office. This year saw **Cassie** take on a different design brief—her wedding—after she and Adam were engaged in March. **Yasmin** joined the DR office in late 2011, after completing her BA in Architecture in Germany and finally moving 'Down Under' to start her new life with her old love. **Eugenio** got a new bright yellow bike and the mini back on the road. Both are hated by Milan's SUV drivers. To escape Brisbane's vicious winter weather **Tom** travelled to the sun-kissed vineyards of southern France. He also enjoyed some time in Germany, though found more pleasure in Teutonic architecture than their wine-making. **Mark** has finally brought his plans for retirement to fruition and will sadly be leaving the office for London. Early mornings rowing on the river toughened **Ingrid** up enough for a major camping adventure.

This followed trips, staying in more solid structures, to China, Straddie, Hervey Bay and the Gold Coast. Invigorated by DR's run in the architect's cup, **Magda** joined the Brisbane GPS rowing club and competed in a series of events in Brisbane and Melbourne. The year ended on a high with Magda receiving, for the first time, a coveted Christmas party award. Just when **Anne** thought the 'teenagers' had finally left the nest, they both returned to keep her on her toes (but she loves it)! And just when **Candece** thought she had kissed coffee making days goodbye, she slipped back into the reception role! Her social life suddenly disappeared as she began studying interior design and welcomed Zipper, a rescued kitten, to the family. **Hayley** broke her foot at ballet, but recovered with a two week stint with her new love — Japan. **Nathalie** was sad to leave the DR team in August but thrilled about a six month university exchange in Denmark — Bachelor Building Technology & Construction Management. It was a wonderful opportunity with great 'side trips' to Nice, Berlin, Oslo, Vienna and New York. Maybe it's something in the water at Baxter Street — **Shirley** took up cycling. Problem now is wresting back the smooth new wheels from her commuting partner. **Luke** enjoyed a mid year break to Washington, Fallingwater,

Boston and New York. A brief trip to Perth and Margaret River filled the wine fridge and stomach! **Tim** and Mel tied the knot in March at Bretts Wharf (thrilled to hear the Brisbane icon is staying open 'til 2015), and enjoyed a relaxing honeymoon in Phuket, Koh Samui, Bangkok and Singapore. Tim spent the rest of the year accruing holiday leave for 2012. **Josh** joined the office after graduating from the Master of Architecture program at UQ. 2011 marked the revival of his fascination for dinosaurs (vicariously through his two-year-old nephew). Later in the year Josh enjoyed the scooter culture of Vietnam, finding the perfect coffee in the coastal town of Vung Tau. DR's graphic designers have set the bar high for international travel. **Rebecca** left us mid-year to travel and work in Whistler. **Marty** spent several months with us, before a three month journey to Malta and beyond, returning just in time to start an architecture degree at UQ. **Zoë** is now in the hot seat and, as far as we know, has no immediate travel plans. Andrew Hillhouse, Jeffrey Briant, Sophie Hughes, Kali Marnane, Miki Grier, Sharon Beattie, Christopher Horsfall and Myles Walker all moved on during 2011. Deicke Richards thanks them for their contributions and looks forward to staying in touch.



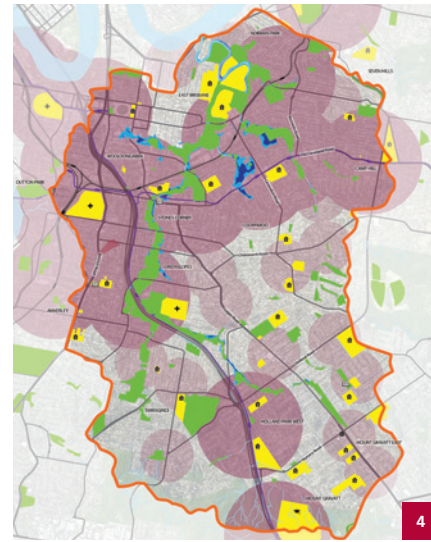
1



2



3



4



5



6



6

1. PS1. This is a design concept for a six storey commercial mixed-use building in an emerging business precinct. Ground level plazas contribute active public space to the precinct. The design supports high performance solar control and energy outcomes, achieving a 5 Star Green Star rating. *(Cameron Davies, Peter Richards, Luke Watson, Tom Kaye)*

2. Mackay City Strategy. The strategy sets out a new vision for the City Centre, emphasising the city's walkability, its liveability and its connection to the Pioneer River. The strategy informs land use and built form requirements for Mackay Regional Council's draft planning scheme. The strategy is due for public release in June 2012, coinciding with the release of Mackay's Draft Planning Scheme. *(Stephen Smith, Peter Richards)*

3. Next Generation Planning. The Next Generation Planning handbook, published in 2011, addresses new ways of planning for SEQ's suburbs, cities and towns. The handbook is a joint project of the Council of Mayors (SEQ) Next Generation Planning initiative under the Australian Government's Housing Affordability Fund (HAF) and the Queensland Government's Growth Management Queensland. We worked with Buckley Vann Town Planning Consultants to complete research and develop the principles that inform the handbook guidelines. Many local authorities are writing new planning schemes and the handbook is expected to assist with this work. *(Peter Richards, Hayley Phillips, Cassie Boyle, Phil Smith, Cameron Davies)*

4. Norman Creek Master Plan. This significant master planning project for Brisbane City Council provides a 'big picture' guide for the rejuvenation of Norman Creek and its surrounds over the next 15 years. It is an integrated water management project covering an area of about 30 square kilometres. The master plan aims to build knowledge and appreciation of the catchment, including how the community can contribute to its resilience. Spaces for sport, recreation and wildlife will be identified. The project team is led by John Gaskell Planning Consultants. *(Cameron Davies, Cassie Boyle)*

5. Airport Link green wall. Green walls are rarely found in infrastructure projects. Airport Link, due to open in 2012, includes 155m of living green wall along both sides of the road at its Toombul portal. We were part of an RPS Group

team for the project, contributing horticultural and design expertise. Plants were grown at Greenstock Nurseries and installed in early 2012. *(Arno King, Tony Mitchell)*

6. Village@Parap. Construction continued on this \$40m mixed-tenure development in Darwin. It includes affordable rental housing, seniors' public housing and units for private market sale. The project developer is Sitzler, working in collaboration with the Northern Territory Government. *(Ian Hamilton, John Deicke, Luke Watson, Eloise Atkinson, Shy Tay, Tim Zieth, Tom Kaye, Magda Myszkowski, Arno King, Myles Walker)*



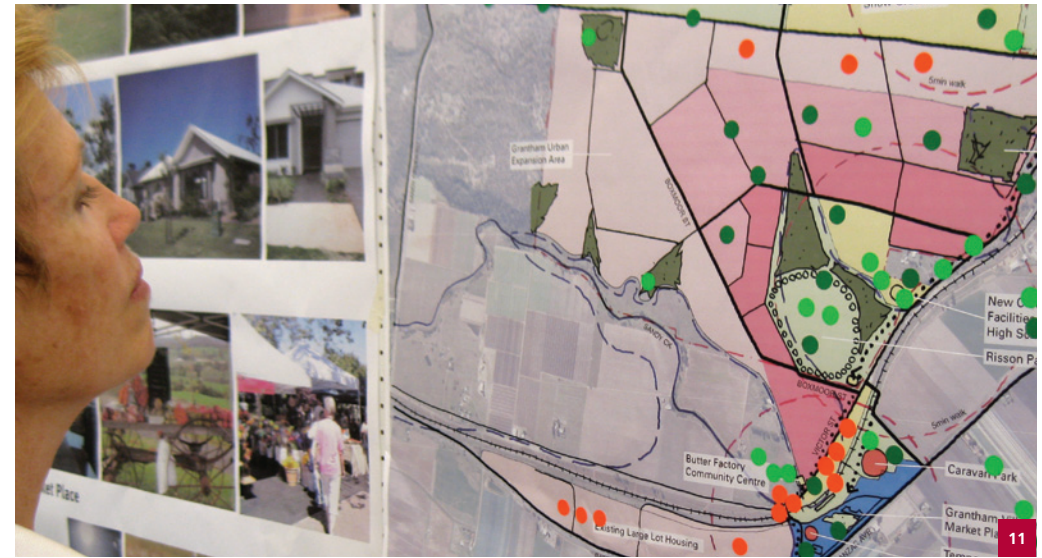
7. Moreton Bay Residential Typologies. This study for Moreton Bay Regional Council focused on attached housing and apartments to address increasing density in the region. The completed work readily communicates ideas about quality residential design, using scenarios, models and simple examples. The typologies addressed urban, coastal and rural contexts. *(Peter Richards, Hayley Phillips, Andrew Hillhouse)*

8. Roma Airport landscape. A sound understanding of the local climate and soil conditions underpins the design solutions for this local landmark. The plan focuses on high performance, low maintenance species, including the bottle tree (example pictured). Shade trees are grouped to frame views and an understorey provides screening and wind protection. *(Gerard Canavan, Arno King, Mark Rees, Yasmin Shafi)*



9. Seniors' housing research. A research project into future models for seniors' housing looks set to have broader impact on attitudes to infill and medium density housing. The University of the Sunshine Coast led the project with support from industry partners. Phil Smith will share research outcomes at conferences and meetings this year. *(Phil Smith, Peter Richards, Eloise Atkinson, Cassie Boyle)*

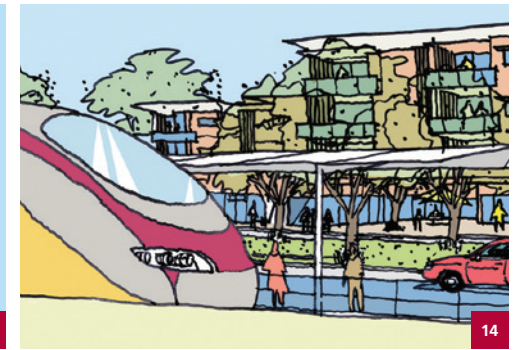
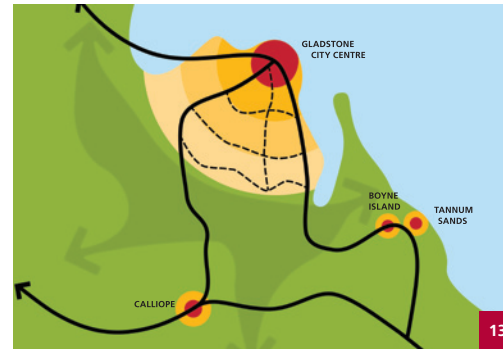
10. Project Waters. Metro Property Development progressed plans for a high intensity, mixed-used precinct on the corner of Brunswick and Water Streets, Fortitude Valley. We worked with bureau architects on the project, providing urban design and architecture services. Our practice has developed designs for the site's historic drill hall, incorporating an indoor pool and cafe. *(Peter Richards, Shem Guthrie, Josh Spillane, Hayley Phillips)*



11. Grantham Reconstruction Master Plan. In just four months in early 2011, a new master plan was developed for Grantham, working closely with the community and the Lockyer Valley Regional Council. The plan guided the relocation of flood-affected properties to a 935 acre land parcel, adjacent to the township and outside the flood-zone. *(Cameron Davies, Cassie Boyle, Hayley Phillips, Josh Spillane)*

12. John Paul College tuckshop and plaza. The new facilities create a dynamic circulation hub for Queensland's largest independent school. The practice also reviewed the school's master plan, originally developed by Deicke Richards in 2008. *(Ingrid Marshall, Cameron Davies, John Deicke, Tom Kaye, Magda Myszkowski)* Photograph: Peter Wann

13. Gladstone Urban Design Study. In association with Buckley Vann Town Planning Consultants, the practice was commissioned to complete an urban design study for Gladstone. The study identifies an overall approach to urban design within parts of the greater Gladstone region relating to key centres, commercial and residential development. This involves understanding each centre, the relationships between them and the pressures they face for growth and consolidation. *(Stephen Smith, Cassie Boyle, Peter Richards)*



14. Moreton Bay Rail Link. We were part of a Parsons Brinkerhoff led consortium, commissioned by Moreton Bay Regional Council to develop local area plans for six proposed rail stations. The 12.6km link will connect Redcliffe Peninsula to Petrie. *(Peter Richards, Phil Smith, Andrew Hillhouse, Cassie Boyle)*

15. Gordon Olive Estate This Defence Housing Australia estate was officially opened in late 2011. We were commissioned at the project's earliest stages to plan the open space network. The landscape features mature retained trees, a natural drainage corridor and recreation space. The practice also provided design guidelines for the estate, addressing built form and public realm controls. *(Arno King, Cameron Davies, Cassie Boyle)*

16. Cotterill Avenue seniors' housing. Construction will be completed in 2012 for this Churches of Christ Care Queensland development at Bribie Island. The housing is targeted to people over 75. *(Luke Watson, Eloise Atkinson, Phil Smith, John Deicke, Tom Kaye, Tim Zieth, Ingrid Marshall, Nathalie Pobitzer, Magda Myszkowski)*

17. Education sector master plans. The practice has more than a decade's history of master planning for independent and Catholic schools. In 2011 and early 2012, we developed master plans for schools in Rockhampton, Bundaberg and Mackay. The planning process develops an agreed vision for the schools and assists with prioritising capital works programs. *(John Deicke, Cameron Davies, Eloise Atkinson with Stephen Bowers, Novus Urban and Peter Edgeley)*

2011 CLIENTS

Alexander Properties | BH Group | Blacks Beach Cove | Brad Walker Agencies | Brisbane Airport Corporation | Brisbane City Council | Buckley Vann Town Planning Consultants | BUPA | Byron Bay West Landowners Association | Cairns Regional Council | Churches of Christ Care Queensland | Council of Mayors (SEQ) | Crighton Group | Defence Housing Australia | Department of Lands and Planning, NT | Department of Local Government and Planning | Emmaus College, Rockhampton | Energex | Fraser Coast Regional Council | Geocal | GHD | Gladstone Regional Council | Greengate | Griffith University | Growth Management Queensland | Hallmark Property | Hit or Miss Pty Ltd | Holy Spirit College, Mackay | Humphreys Reynolds Perkins | Hutchinson Builders | Gall Architects | John Chambers | John Gaskell Planning Consultants | John Paul College | Jones Lang LaSalle | LandCorp | Lauder Pty Ltd | Lend Lease | Lockyer Valley Regional Council | Mackay Regional Council | Maranoa Regional Council | Metro Property Development | Montague Developments | MontroseAccess | Moreton Bay Regional Council | MurphySchmidt | Novus Urban | Our Lady of the Rosary | One Zero Australia | Parsons Brinckerhoff | Powerlink Queensland | Project Services | Queensland Health | RCP | RPS | Searchlight Education | Shalom College, Bundaberg | Shire of Ashburton | Sitzler | South Bank Corporation | Springfield Land Corporation | Stella Maris Parish | Stockland | Stuart Gamblin | Sunshine Coast Council | Surat Basin Property Group | Thiess | Tipalea Partners | Toowoomba Regional Council | TPG | University of the Sunshine Coast | Urban Land Development Authority | Westdan | The Wesley Hospital Kim Walters Choices Program |

2011 STAFF

Eloise Atkinson | Sharon Beattie | Eugenio Belli | Cassie Boyle | Jeffrey Briant | Cameron Davies | John Deicke | Anne Dobson | Shem Guthrie | Miki Grier | Ian Hamilton | Andrew Hillhouse | Rebecca Hodgson | Christopher Horsfall | Sophie Hughes | Tom Kaye | Arno King | Candeece Long | Kali Marnane | Ingrid Marshall | Natalie Martinz | Magda Myszkowski | Hayley Phillips | Nathalie Pobitzer | Shirley Powell | Mark Rees | Peter Richards | Marty Said | Yasmin Shafi | Phil Smith | Stephen Smith | Josh Spillane | Zoë Strout | Myles Walker | Luke Watson | Tim Zieth



Cover image. Russell & Manning Streets apartments.

This 12 storey South Brisbane project for Metro Property Development will provide more than 160 one and two bedroom apartments on a prominent corner site. Communal terraces, a pool, a reading room, green space and ground level retail form part of the scheme. DA approval was secured in December. (Peter Richards, Shem Guthrie, Josh Spillane, Hayley Phillips, Arno King)

